

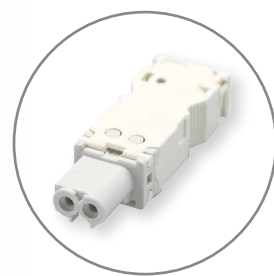
REPORT

7L Series New LED Panel Light

NEW



Design by MINELLI | FOSSATI



Connector
included



Finder's new LED light for electrical panels - with magnetic mounting

- Mounting "Two in one" - Direct magnetic mounting or through a screw-fixed metallic support
- Brightness levels: 600 or 1200 lumens
- Versions with: direct switching, ON/OFF switch or movement detector
- Power supply - Multi-voltage: 12...48 V AC/DC and 110...240 V AC/DC
- New design

Approvals



Type 7L.43 (600 lumens)
Type 7L.46 (1200 lumens)

- Direct magnetic mounting or through a screw-fixed metallic support
- Power supply: 12...48 V AC/DC and 110...240 V AC/DC
- Nominal power consumption: 6 W (600 lm), 9 W (1200 lm)
- Radiation angle: 120°
- Colour temperature: 5,000 K
- Protection category: IP20

Switching without
ON/OFF switch or
movement detector



Switching via
ON/OFF switch



Switching via
movement
detector



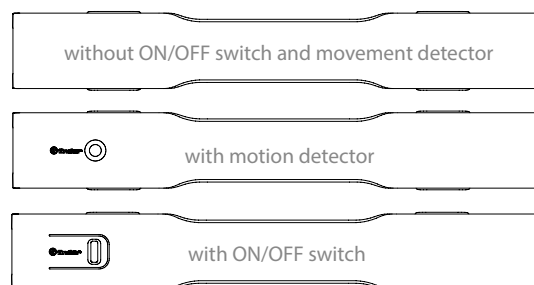
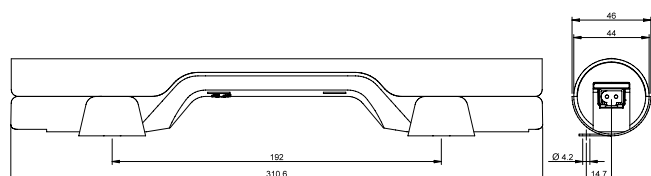
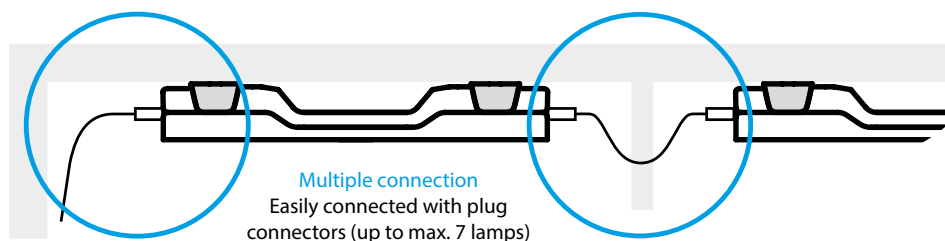
Magnetic fixing
direct to
metallic panel



Magnetic fixing
via screw-fixed
metallic support



Quick and simple wiring system
via **push-in terminals** for the
connection to a single unit, or
via **plug-in terminals** for the
connection to a single
or multiple units.



Code Lamps	Lumen	Supply voltage	Switching	Connections
7L.43.0.024.0100	600	024 = (12...48)V AC/DC	Without ON/OFF switch and movement detector	Push-in terminals
7L.43.0.024.0200	600	024 = (12...48)V AC/DC	Without ON/OFF switch and movement detector	Plug-in terminals
7L.43.0.230.0100	600	230 = (110...240)V AC/DC	Without ON/OFF switch and movement detector	Push-in terminals
7L.43.0.230.0200	600	230 = (110...240)V AC/DC	Without ON/OFF switch and movement detector	Plug-in terminals
7L.43.0.024.1100	600	024 = (12...48)V AC/DC	Via ON/OFF switch	Push-in terminals
7L.43.0.024.1200	600	024 = (12...48)V AC/DC	Via ON/OFF switch	Plug-in terminals
7L.43.0.024.2100	600	024 = (12...48)V AC/DC	Via movement detector	Push-in terminals
7L.43.0.024.2200	600	024 = (12...48)V AC/DC	Via movement detector	Plug-in terminals
7L.43.0.230.1100	600	230 = (110...240)V AC/DC	Via ON/OFF switch	Push-in terminals
7L.43.0.230.1200	600	230 = (110...240)V AC/DC	Via ON/OFF switch	Plug-in terminals
7L.43.0.230.2100	600	230 = (110...240)V AC/DC	Via movement detector	Push-in terminals
7L.43.0.230.2200	600	230 = (110...240)V AC/DC	Via movement detector	Plug-in terminals
7L.46.0.024.1100	1200	024 = (12...48)V AC/DC	Via ON/OFF switch	Push-in terminals
7L.46.0.024.1200	1200	024 = (12...48)V AC/DC	Via ON/OFF switch	Plug-in terminals
7L.46.0.024.2100	1200	024 = (12...48)V AC/DC	Via movement detector	Push-in terminals
7L.46.0.024.2200	1200	024 = (12...48)V AC/DC	Via movement detector	Plug-in terminals
7L.46.0.230.1100	1200	230 = (110...240)V AC/DC	Via ON/OFF switch	Push-in terminals
7L.46.0.230.1200	1200	230 = (110...240)V AC/DC	Via ON/OFF switch	Plug-in terminals
7L.46.0.230.2100	1200	230 = (110...240)V AC/DC	Via movement detector	Push-in terminals
7L.46.0.230.2200	1200	230 = (110...240)V AC/DC	Via movement detector	Plug-in terminals