



CARREL-ELECTRADE LTD

not just products... solutions!

HUMAN MACHINE INTERFACES

HM500 SERIES

Robust, state-of-the-art
touch panels

Panasonic



CARREL-ELECTRADE LIMITED

Auckland Tel: 09-525 1753
Fax: 09-525 1756

Christchurch Tel: 03-366 1242
Fax: 03-379 1991

Email: sales@carrel-electrade.co.nz
Web: www.carrel-electrade.co.nz

HM500 series: Robust & state-of-the-art

Key features

The HM500 series combines state-of-the-art features and a top performance HMI in an outstanding design. The ideal choice for satisfying a wide range of applications.

- Available sizes: 4.3", 7", 10.4", 13.3"
- IP66 front panel
- Innovative, full-metal design
- Bright, 64K color LED technology display
- 600MHz & 1GHz ARM cortex A8 processor
- Microsoft Windows CE 6.0 operating system
- Ethernet, USB and integrated configurable serial ports
- SD card slot
- Gateway function, remote application control and online customer support
- Horizontal or vertical installation
- Low power consumption; with cooling system
- CE/UL certification
- Tropicalized electronics

HMWin: Programming environment

Key features

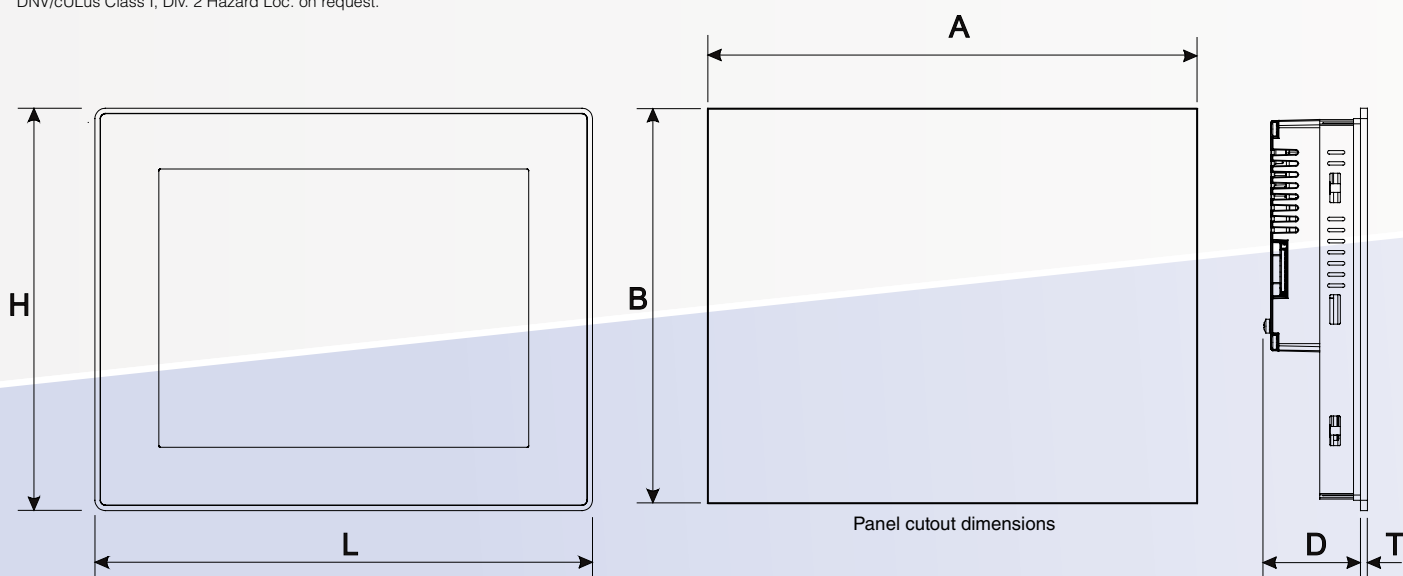
- Simple, intuitive interface
- Project tree resource navigation
- Data displayed in numeric format, bar graph, analog indicators and images
- Multilanguage support with import and export function for texts
- Data acquisition and display in line or bar graphs
- Alarm management and event history
- User group and password management
- Audit Trail recipe management
- Remote monitoring and control with client-server architecture based on web technology (compatible with smartphones and tablets)
- Powerful JavaScript engine
- Large ready-to-use macro library
- Reports printable on USB printer or saveable as a PDF file on all internal and external locations
- Advanced HMI objects: scheduler and event planning, rotating menus, RSS Feeds, IP camera input
- On-line and off-line simulation





	HM504	HM507	HM510
Part number	AIHM504	AIHM507	AIHM510
Display size	4.3" TFT 16:9	7" TFT 16:9	10.4" TFT
Resolution	480 x 272, WQVGA	800 x 480, WVGA	800 x 600, SVGA
Backlight	LED	LED	LED
Brightness	150 cd/m ² typ.	300 cd/m ² typ.	300 cd/m ² typ.
Dimming	Yes	Yes	Yes
Colors	64K	64K	64K
Touchscreen	Analog resistive	Analog resistive	Analog resistive
Portrait mode	Yes	Yes	Yes
User memory	128MB flash	128MB flash	256MB flash
Serial port (Universal)	RS232, RS485, RS422, software configurable	RS232, RS485, RS422, software configurable	RS232, RS485, RS422, software configurable
Ethernet port	2 10/100Mbit with integrated switch	2 10/100Mbit with integrated switch	2 10/100Mbit with integrated switch
USB port	1 Host interface version 2.0	2 Host interfaces (1 version 2.0, 1 version 2.0 and 1.1)	2 Host interfaces (1 version 2.0, 1 version 2.0 and 1.1)
Vector graphics	Yes, supports SVG	Yes, supports SVG	Yes, supports SVG
Dynamic objects	Yes	Yes	Yes
TrueType font	Yes	Yes	Yes
Alarms	Yes	Yes	Yes
Alarm history	Yes	Yes	Yes
Recipes	Yes	Yes	Yes
Password	Yes	Yes	Yes
Trends	Yes	Yes	Yes
Multilanguage management	Yes	Yes	Yes
Real Time Clock	Yes, with battery	Yes, with battery	Yes, with battery
Battery	Rechargeable battery	Rechargeable battery	Rechargeable battery
Expansion slots	1 optional plugin	2 optional plugins	2 optional plugins
Memory card	SD card slot	SD card slot	SD card slot
Voltage	24V DC (10 - 32V DC)	24V DC (10 - 32V DC)	24V DC (10 - 32V DC)
Max. current consumption (typ.)	0.4A at 24V DC (max.)	0.7A at 24V DC (max.)	1A at 24V DC (max.)
Operating temperature	0 to 50°C	0 to 50°C	0 to 50°C
Storage temperature	-20 to +70°C	-20 to +70°C	-20 to +70°C
Humidity	5 to 85% RH, non-condensing	5 to 85% RH, non-condensing	5 to 85% RH, non-condensing
Weight	Approx. 1.0kg	Approx. 1.0kg	Approx. 2.1kg
Front panel (L x H)	147 x 107mm	187 x 147mm	287 x 232mm
Panel cutout (A x B)	136 x 96mm	176 x 136mm	276 x 221mm
Depth (D + T)	56 + 4mm	47 + 4mm	56 + 4mm
Degree of protection (front)	IP66	IP66	IP66
Degree of protection (back)	IP20	IP20	IP20
Certification	CE, UL*	CE, UL*	CE, UL*

*DNV/cULus Class I, Div. 2 Hazard Loc. on request.



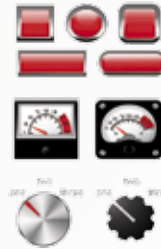
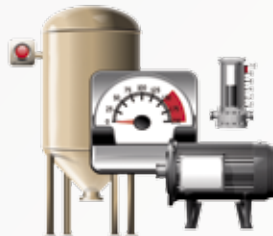


HM513

AIHM513
13.3" TFT 16:9
1280 x 800, WXGA
LED
300 cd/m² typ.
Yes
64K
Analog resistive
Yes
256MB flash
RS232, RS485, RS422, software configurable
2 10/100Mbit with integrated switch
2 Host interfaces (1 version 2.0, 1 version 2.0 and 1.1)
Yes, supports SVG
Yes
Yes
Yes
Yes
Yes
Yes
Yes
Yes
Yes, with battery
Rechargeable battery
2 optional plugins
SD card slot
24V DC (10 - 32V DC)
1.2A at 24V DC (max.)
0 to 50°C
-20 to +70°C
5 to 85% RH, non-condensing
Approx. 2.8kg
336 x 267mm
326 x 256mm
56 + 4mm
IP66
IP20
CE, UL*

Quality vector graphics

- Supports SVG vector graphics
- Dynamic object properties with tags
- Object properties accessible via JavaScript
- Dynamic interaction between properties of different objects
- Animation
- TrueType font
- Large set of symbols and objects



Communication and Gateway

- Integrated web server, FTP server
- Integrated web browser
- Supports VNC technology for remote desktop
- E-mail alerts
- Gateway function between different protocols

