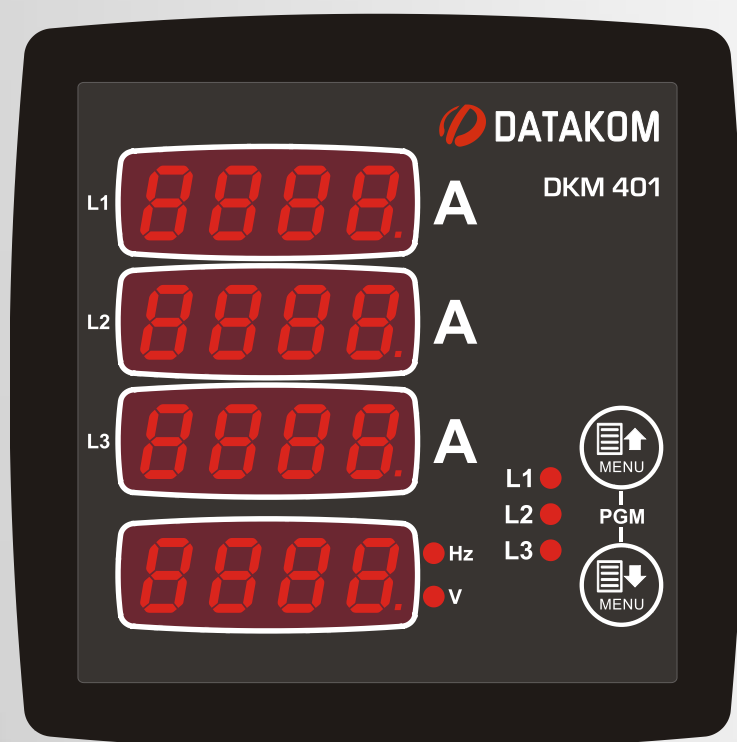


DKM-401

DIGITAL MULTIMETER

96x96mm



INTRODUCTION

The DKM-401 is a low cost precision instrument designed to display various AC parameters in a 3-phase distribution panel.

The standard unit is designed for 230/400V network. A different version is available for 120/208V systems.

The unit fits into a standard 92x92mm panel opening.

MEASURED PARAMETERS

Phase to phase voltages: U12-U23-U31

Phase to neutral voltages: V1-V2-V3

Phase currents: I1-I2-I3

Frequency: F

FEATURES

True RMS measurements

Class 0,5

Flush mount

Front panel programming

Reduced panel depth

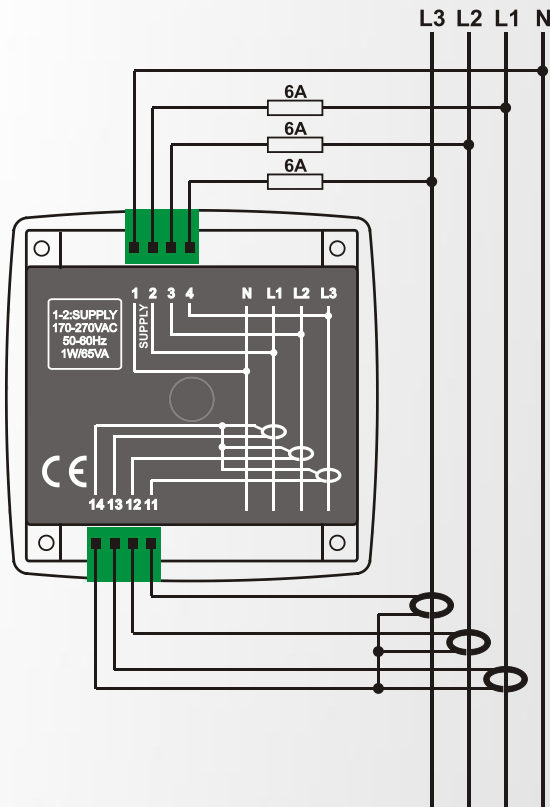
Wide operating temperature range

Sealed front panel (IP54)

Plug-in connection system

Low cost

CONNECTION DIAGRAM



TECHNICAL SPECIFICATIONS

Power Supply Input:

170 - 275VAC,
50 - 60Hz nominal ($\pm 10\%$)
Different supply voltages available.

Measurement Input Range:

Voltage: 10 - 300 V AC (L-N)
20 - 520 V AC (L-L)
Current: 0.2 - 5.5 A AC
Frequency: 30 - 100 Hz

Accuracy:

Voltage: 0.5%+1 digit
Current: 0.5%+1 digit
Frequency: 0.5%+1 digit

Measurement Range:

CT range: 5/5A to 5000/5A

Power Consumption:

< 4 W

Voltage burden:

< 0.1VA per phase

Current burden:

< 1VA per phase

Operating Temperature:

-20°C to +80°C (-4 to +176 °F).

Maximum humidity:

95% non-condensing.

Degree of Protection:

IP 54 (Front Panel)

IP 30 (Back panel)

Enclosure:

Non-flammable, ROHS compliant

Installation:

Flush mounting with rear brackets

Dimensions:

102x102x53mm (WxHxD)

Panel Cutout:

92x92mm

Weight:

200 gr

EU Directives:

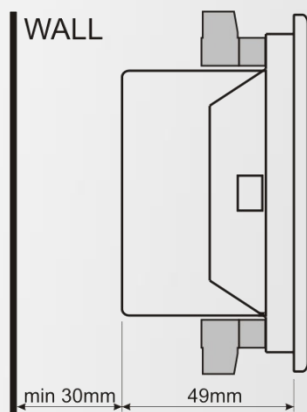
2006/95/EC (LVD)
2004/108/EC (EMC)

Norms of

reference:

EN 61010 (safety)
EN 61326 (EMC)

MOUNTING TOLERANCES



PACKAGING INFORMATION

Pieces per Package: 12 pieces

Package Size: 280 x 170 x 215mm

Package Weight: 2.6 kg

PANEL CUTOUT DIMENSIONS

