

RM-16WAY-IOLINK RELAY MODULE

IO-LINK Relay Module

The relay module provides 16 relays directly driven by a plug in IO-Link module. The IO-Link module plugs into a DB-25 connector on one end of the relay module and has 24 PNP outputs and a common.

The 16 relays can be either mechanical Finder 46.61-024-DC relays or Autonics SRS1 series solid state relays. The relay module can be populated with a mixture of mechanical relays or solid state relays to suit the loads being switched.

Order code:

RM-16WAY-IOLINK 16 way IO-LINK relay module.
Fitted with Finder 46.61-024V-DC relays

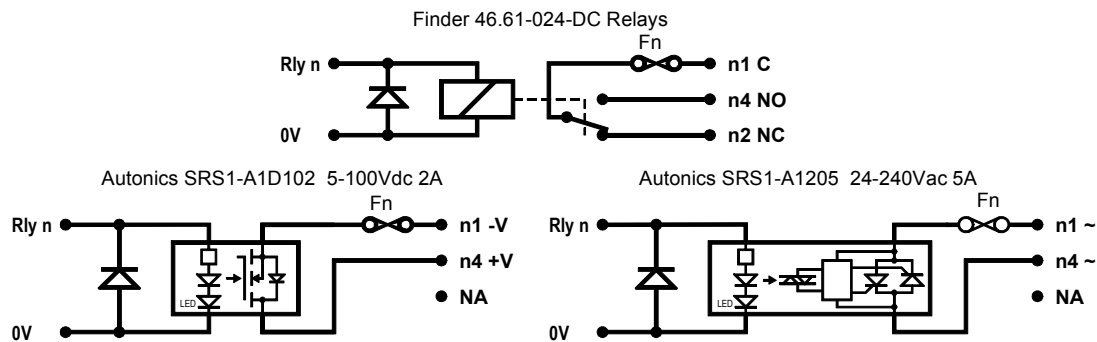
Optional customer specified mixture of
Finder 46.61-024V-DC relays or
Autonics SRS1 solid state relays on request



Specifications

Outputs	16 relays with fuse holders * NOTE fuses not supplied with the unit Either Finder 46.61-024-DC mechanical relays or Autonics SRS1 solid state relays 46.61-024-DC relays : 250VAC 10A CO (fuse/fuse holder limited) SRS1-A1205 relays : 24-240VAC 5A NO SRS1-A1D102 relays : 5-100VDC 2A NO
Relay Control	: Plug in IO-Link module, IOL-HUB-D25-24DO
Temperature	Operating : -10°C to +20°C to +50°C Storage : -20°C to +70°C
EMC Compliance	: AS/NZS 61000.6.3:2012
Housing	DIN rail mounted polyamide, flame retardant UL 94 V0. : Total weight with 46.61 relays fitted 770gms
Terminals	Spring steel clamp, tin plated copper alloy terminal : up to 1.5mm ² stranded conductor : wire stripping 9mm

Relay Output Configuration Mechanical Relays or Solid State Relays



*Note. No NC connection with solid state relays.

CARREL ELECTRADE LTD

MANUFACTURERS, IMPORTERS AND DISTRIBUTORS OF ELECTRICAL ENGINEERING PRODUCTS
POSTAL ADDRESS: P O BOX 11078, ELLERSLIE 1542, AUCKLAND NEW ZEALAND
FACTORY AND OFFICE: 661 GREAT SOUTH ROAD, PENROSE 1061
TELEPHONE: +64-9-525 1753 FACSIMILE: +64-9-525 1756
CHRISTCHURCH BRANCH: 73B BRISBANE STREET, SYDENHAM
TELEPHONE: 03-366 1242 FACSIMILE: 03-379 1991
EMAIL: sales@carrel-electrade.co.nz WEB: www.carrel-electrade.co.nz

RM-16WAY-IOLINK RELAY MODULE

