



BX Series Terminal Type Photoelectric Sensor for Long Distance Autonics



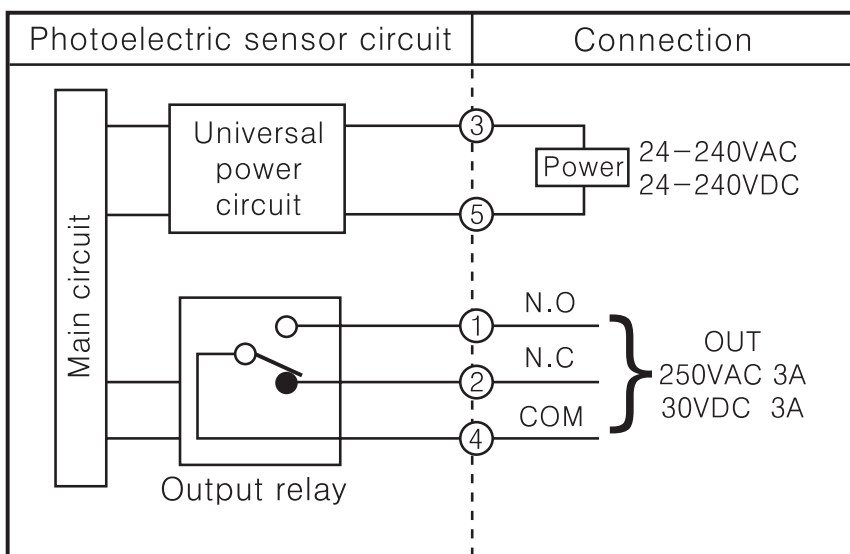
BX Series has built-in timer function enabling selection of ON Delay, OFF Delay and One-shot Delay using a switch. This type can perform superior sensing performance by built-in sensitivity adjustment VR. Also, user convenience was enhanced by introducing a wide range of power supply.

Main Features

- Built-in sensitivity adjustment VR
- Timer ; On Delay, Off Delay, One Shot Delay.
- NPN/PNP open collector output (DC power only)
- Self-diagnosis function (Green LED is on at stable sensing).
- Reverse and overcurrent protection circuits
- Wide Range power supply;
- 24-240VAC +/- 10% @ 50-60Hz
- 24-240VDC +/- 10% @ 50-60Hz
- IP66 Protection, IEC standard
- NOTE; C/W brackets and reflector for retro model

Control output diagram

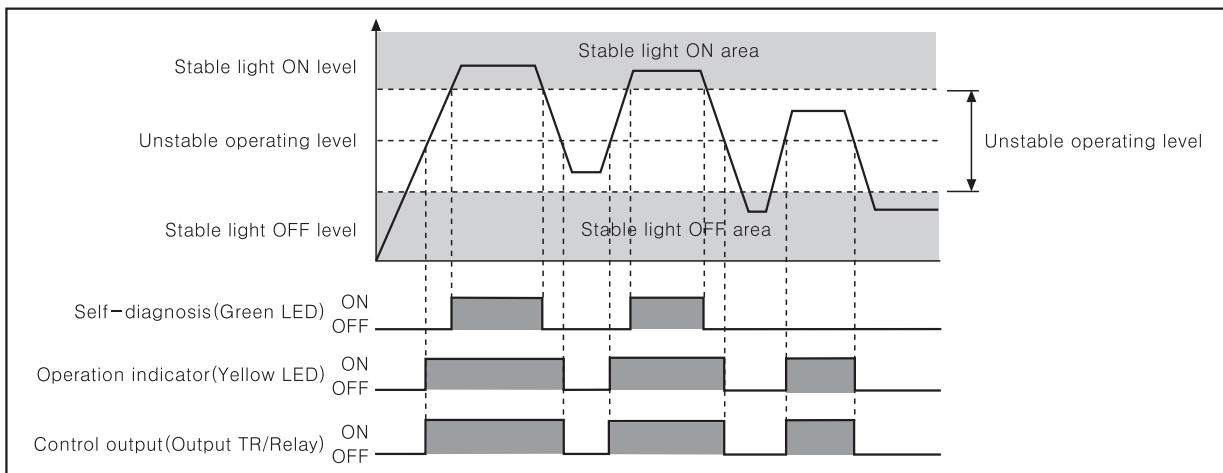
⊙Universal voltage



CARREL-ELECTRADE LIMITED

Operation mode and timing diagram

●Light ON mode



※ Operation for Dark ON mode is opposed to above chart indication for Light ON mode.

※ To prevent from the misoperation, output of units keeps the state of OFF for 0.5sec. after power ON.

Timer mode

Timer mode	Switch position		Status of light Operation mode			
	S1	S2		ON	OFF	
NORMAL MODE	ON	ON	Light ON	OUT (Control output)	ON	OFF
			Dark ON	OUT (Control output)	ON	OFF
ONE SHOT DELAY MODE	ON	OFF	Light ON	OUT (Control output)	ON	OFF
			Dark ON	OUT (Control output)	ON	OFF
ON DELAY MODE	OFF	ON	Light ON	OUT (Control output)	ON	OFF
			Dark ON	OUT (Control output)	ON	OFF
OFF DELAY MODE	OFF	OFF	Light ON	OUT (Control output)	ON	OFF
			Dark ON	OUT (Control output)	ON	OFF

※ T : Time set by timer adjuster.

Part no.

BX15M-TFR	Thru-Beam type photo sensor 15m sensing Range
BX15-TFR-T	Thru-Beam type photo sensor 15m sensing Range W/Timer
BX5M-MFR	Retro-Reflective type photo sensor 5m sensing Range
BX5M-MFR-T	Retro-Reflective type photo sensor 5m sensing Range W/Timer
BX700DFR	Diffuse-Reflective type photo sensor 700mm Sensing Range
BX700DFR-T	Diffuse-Reflective type photo sensor 700mm Sensing Range W/Timer