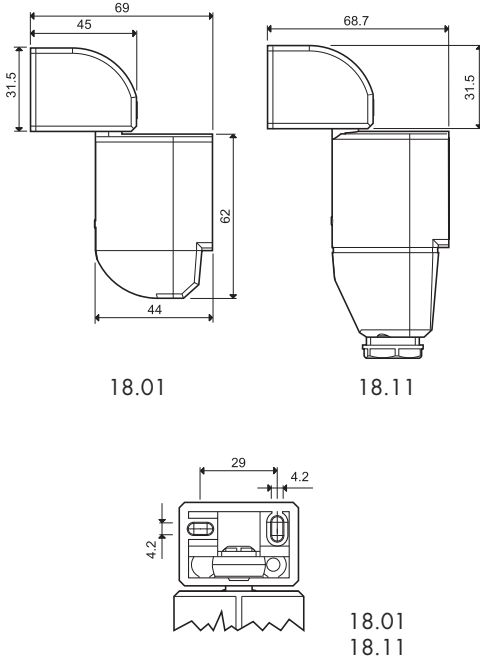


## Features

PIR movement detector for internal or external installations - wall mounting

- Small size
- Adjustable ambient light intervention threshold
- Adjustable Light On Time
- Universal mounting position - permits the selection of any area for survey
- Wide angle of survey



### 18.01

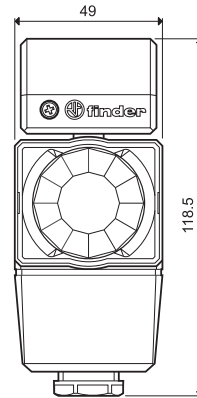
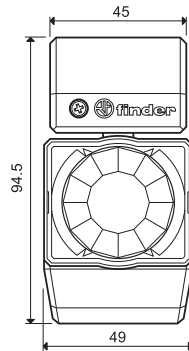


### 18.11



- 1 NO (SPST-NO) 10 A
- Internal installations
- Particularly suited for wall mounting

- 1 NO (SPST-NO) 10 A
- External installations
- Particularly suited for wall mounting



### Contact specification

|   |                      |       |                      |       |
|---|----------------------|-------|----------------------|-------|
| Number of contacts                              | 1 NO (SPST-NO)       |       | 1 NO (SPST-NO)       |       |
| Rated current/Maximum peak current A            | 10/20 (100 A - 5 ms) |       | 10/20 (100 A - 5 ms) |       |
| Rated voltage/Maximum switching voltage V AC    | 230/230              |       | 230/230              |       |
| Rated load AC1 VA                               | 2,300                |       | 2,300                |       |
| Rated load AC15 (120/230 V) VA                  | 250                  | 450   | 250                  | 450   |
| Nominal lamp rating: incandescent (120/230 V) W | 500                  | 1,000 | 500                  | 1,000 |
| compensated fluorescent (120/230 V) W           | 200                  | 350   | 200                  | 350   |
| uncompensated fluorescent (120/230 V) W         | 250                  | 500   | 250                  | 500   |
| halogen (120/230 V) W                           | 500                  | 1,000 | 500                  | 1,000 |
| Standard contact material                       | AgSnO <sub>2</sub>   |       | AgSnO <sub>2</sub>   |       |

### Coil specification

|                                 |                  |                  |
|---------------------------------|------------------|------------------|
| Nominal voltage V AC (50/60 Hz) | 120...230        | 120...230        |
| DC                              | —                | —                |
| Rated power AC/DC               | 2.5 VA [50 Hz]/— | 2.5 VA [50 Hz]/— |
| Operating range V AC (50/60 Hz) | 96...253         | 96...253         |
| DC                              | —                | —                |

### Technical data

|  |                       |                       |
|--|-----------------------|-----------------------|
| Electrical life at rated load AC1 cycles | 100 · 10 <sup>3</sup> | 100 · 10 <sup>3</sup> |
| Ambient light intervention threshold lx  | 5...350               | 5...350               |
| Light on time after last detection       | 10 s...12 min         | 10 s...12 min         |
| Angle of survey                          | 110°                  | 110°                  |
| Depth of field m                         | 10                    | 10                    |
| Ambient temperature range °C             | -10...+50             | -30...+50             |
| Protection category                      | IP 40                 | IP 54                 |

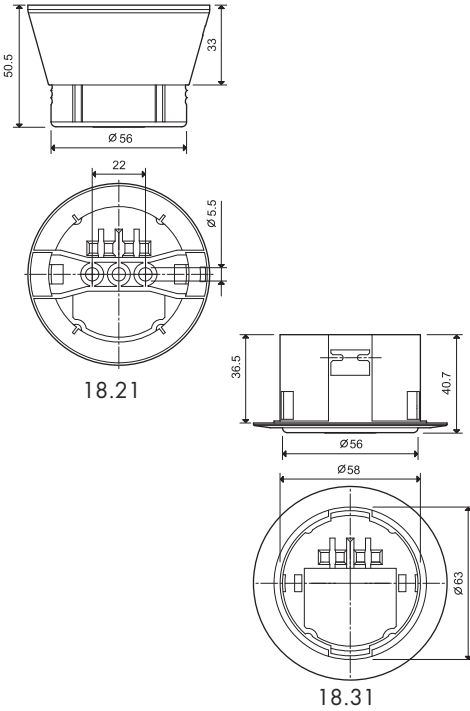
Approvals (according to type)



## Features

### PIR movement detector for internal installations

- Ceiling mounting
- Small size
- Adjustable ambient light intervention threshold
- Adjustable Light On Time
- Wide angle of survey



**18.21**

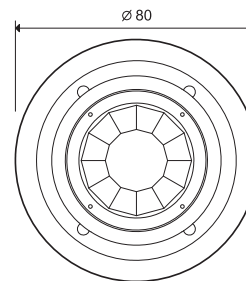
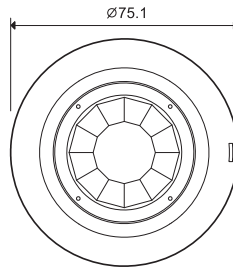


**18.31**



- 1 NO (SPST-NO) 10 A
- Internal ceiling installation
- Surface mounting
- Output connected to supply voltage

- 1 NO (SPST-NO) 10 A
- Internal ceiling installation
- Recessed mounting
- Output connected to supply voltage



### Contact specification

|   |                |                      |                      |                    |       |
|---|----------------|----------------------|----------------------|--------------------|-------|
| Number of contacts                      | 1 NO (SPST-NO) |                      | 1 NO (SPST-NO)       |                    |       |
| Rated current/Maximum peak current      | A              | 10/20 (100 A - 5 ms) | 10/20 (100 A - 5 ms) |                    |       |
| Rated voltage/Maximum switching voltage | V AC           | 230/230              | 230/230              |                    |       |
| Rated load AC1                          | VA             | 2,300                |                      | 2,300              |       |
| Rated load AC15                         | (120/230 V) VA | 250                  | 450                  | 250                | 450   |
| Nominal lamp rating: incandescent       | (120/230 V) W  | 500                  | 1,000                | 500                | 1,000 |
| compensated fluorescent                 | (120/230 V) W  | 200                  | 350                  | 200                | 350   |
| uncompensated fluorescent               | (120/230 V) W  | 250                  | 500                  | 250                | 500   |
| halogen                                 | (120/230 V) W  | 500                  | 1,000                | 500                | 1,000 |
| Standard contact material               |                | AgSnO <sub>2</sub>   |                      | AgSnO <sub>2</sub> |       |

### Coil specification

|                   |                 |                |  |                |  |
|-------------------|-----------------|----------------|--|----------------|--|
| Nominal voltage   | V AC (50/60 Hz) | 120...230      |  | 120...230      |  |
|                   | DC              | -              |  | -              |  |
| Rated power AC/DC |                 | 2 VA (50 Hz)/1 |  | 2 VA (50 Hz)/1 |  |
| Operating range   | V AC (50/60 Hz) | 96...253       |  | 96...253       |  |
|                   | DC              | -              |  | -              |  |

### Technical data

|                                      |        |                       |  |                       |  |
|--------------------------------------|--------|-----------------------|--|-----------------------|--|
| Electrical life at rated load AC1    | cycles | 100 · 10 <sup>3</sup> |  | 100 · 10 <sup>3</sup> |  |
| Ambient light intervention threshold | lx     | 5...350               |  | 5...350               |  |
| Light on time after last detection   |        | 10 s...12 min         |  | 10 s...12 min         |  |
| Angle of survey                      |        | 110°                  |  | 110°                  |  |
| Sensing area diameter                | m      | 8                     |  | 8                     |  |
| Ambient temperature range            | °C     | -10...+50             |  | -10...+50             |  |
| Protection category                  |        | IP 40                 |  | IP 40                 |  |

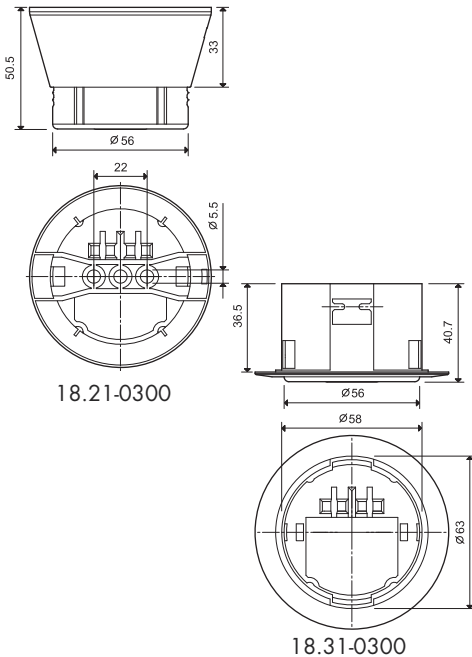
### Approvals (according to type)



## Features

### PIR movement detector for internal installations, with potential free contact

- Applications where interface to PLC or BMS is required
- Ceiling mounting
- Small size
- Adjustable ambient light intervention threshold
- Adjustable Light On Time
- Wide angle of survey



### **NEW** 18.21-0300

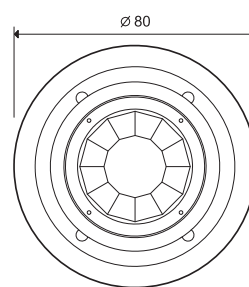
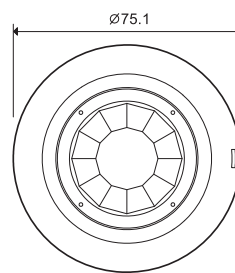


- 1 NO (SPST-NO) 10 A
- Internal ceiling installation
- Surface mounting
- Output with potential free contact

### **NEW** 18.31-0300



- 1 NO (SPST-NO) 10 A
- Internal ceiling installation
- Recessed mounting
- Output with potential free contact



| Contact specification                   |                                     |                       |                       |
|---|-------------------------------------|-----------------------|-----------------------|
| Number of contacts                      |                                     | 1 NO (SPST-NO)        | 1 NO (SPST-NO)        |
| Rated current/Maximum peak current      | A                                   | 10/20 (100 A - 5 ms)  | 10/20 (100 A - 5 ms)  |
| Rated voltage/Maximum switching voltage | V AC                                | 250/400               | 250/400               |
| Rated load AC1                          | VA                                  | 2,500                 | 2,500                 |
| Rated load AC15                         | (230 V) VA                          | 450                   | 450                   |
| Nominal lamp rating:                    | incandescent (230 V) W              | 1,000                 | 1,000                 |
|   | compensated fluorescent (230 V) W   | 350                   | 350                   |
|   | uncompensated fluorescent (230 V) W | 500                   | 500                   |
|   | halogen (230 V) W                   | 1,000                 | 1,000                 |
| Standard contact material               |                                     | AgSnO <sub>2</sub>    | AgSnO <sub>2</sub>    |
| Coil specification                      |                                     |                       |                       |
| Nominal voltage                         | V AC (50/60 Hz)                     | 120...230             | 120...230             |
|   | V AC (50/60 Hz)/DC                  | 24                    | 24 V                  |
| Rated power AC/DC                       |                                     | 2 VA (50 Hz)/1        | 2 VA (50 Hz)/1        |
| Operating range                         | V AC (50/60 Hz)                     | 96...253              | 96...253              |
|   | V AC (50/60 Hz)/DC                  | 19.2...26.4           | 19.2...26.4           |
| Technical data                          |                                     |                       |                       |
| Electrical life at rated load AC1       | cycles                              | 100 · 10 <sup>3</sup> | 100 · 10 <sup>3</sup> |
| Ambient light intervention threshold    | lx                                  | 5...350               | 5...350               |
| Light on time after last detection      |                                     | 10 s...12 min         | 10 s...12 min         |
| Angle of survey                         |                                     | 110°                  | 110°                  |
| Sensing area diameter                   | m                                   | 8                     | 8                     |
| Ambient temperature range               | °C                                  | -10...+50             | -10...+50             |
| Protection category                     |                                     | IP 40                 | IP 40                 |
| Approvals (according to type)           |                                     | <b>CE</b>             |                       |

## Ordering information

Example: 18 series, PIR movement detector for internal installations, wall mounting, 1 NO (SPST-NO) 10 A contact, 120...230 V AC supply.

**1 8 . 0 1 . 8 . 2 3 0 . 0 0 0 0**

**Series** ———  
**Type** ———  
 0 = Internal installation - wall mounting  
 1 = External installations  
 2 = Internal ceiling installation - surface mounting  
 3 = Internal ceiling installation - recessed mounting

**Contact circuit**  
 0 = Volt-free contact  
 3 = Potential free contact (18.21/31-0300 only)  
**Supply voltage**  
 024 = 24 V AC/DC for types 18.21/31-0300 only  
 230 = 120...230 V  
**Supply version**  
 8 = AC (50/60 Hz)  
**No. of poles**  
 1 = Single pole switching 1 NO (SPST-NO), 10 A

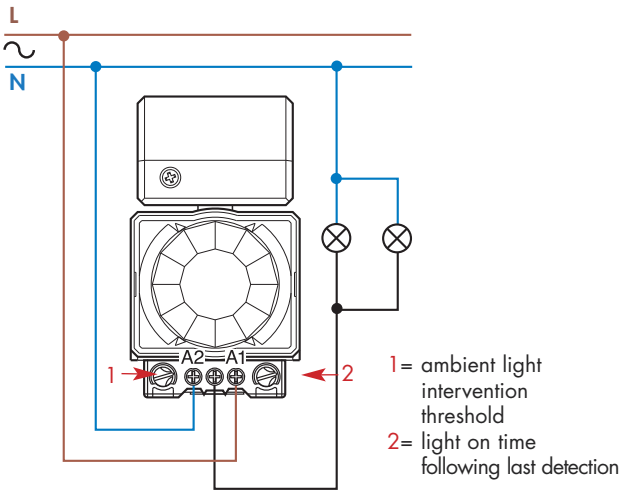
## Technical data

| Insulation                                     |     |  |
|--|-----|--|
| Dielectric strength between open contacts V AC |     | 1,000                                    |
| Between supply and contact V AC                |     | 1,500 (types 18.21...0300, 18.31...0300) |
| Other data                                     |     |  |
| ⊕ Screw torque Nm                              | 0.5 |  |
| Max. cable size mm <sup>2</sup>                | 1.5 |  |

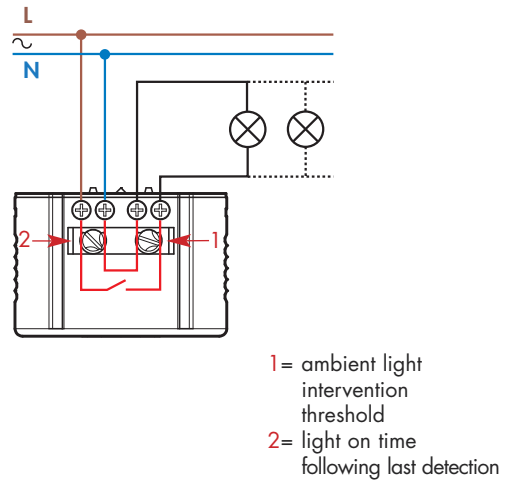
- Following the initial power-on, and power-on following a power interruption, the detector makes a hardware-software initialisation for approximately 30 seconds. However, the behavior of the output during this 30 seconds will depend on certain circumstances:
  - If the detector was in the On state before the power interruption, and if the lighting level is (currently) below the pre-set threshold, then the output contact will immediately close when the power is re-applied, for the time delay set by the potentiometer (irrespective of whether movement is being detected).
  - If the detector was in the Off state before the power interruption, or if the ambient light is currently over the pre-set threshold, then the detector will not switch-on until the end of the initialisation phase (assuming movement is then detected).

## Wiring diagram

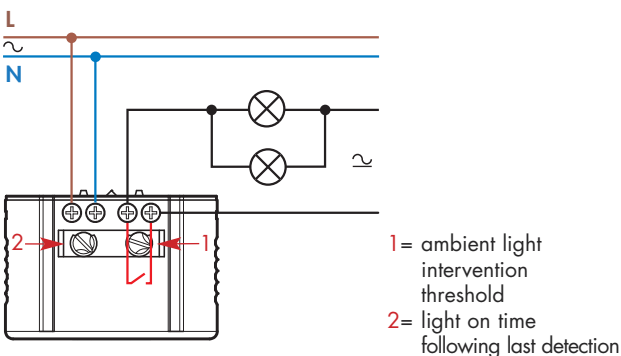
Type 18.01 / 18.11



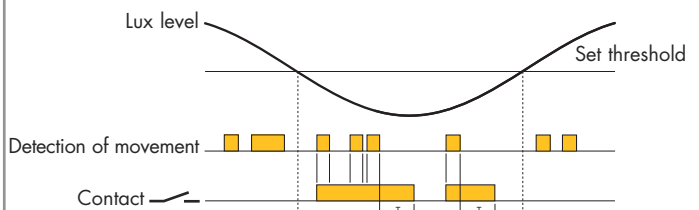
Type 18.21 / 18.31



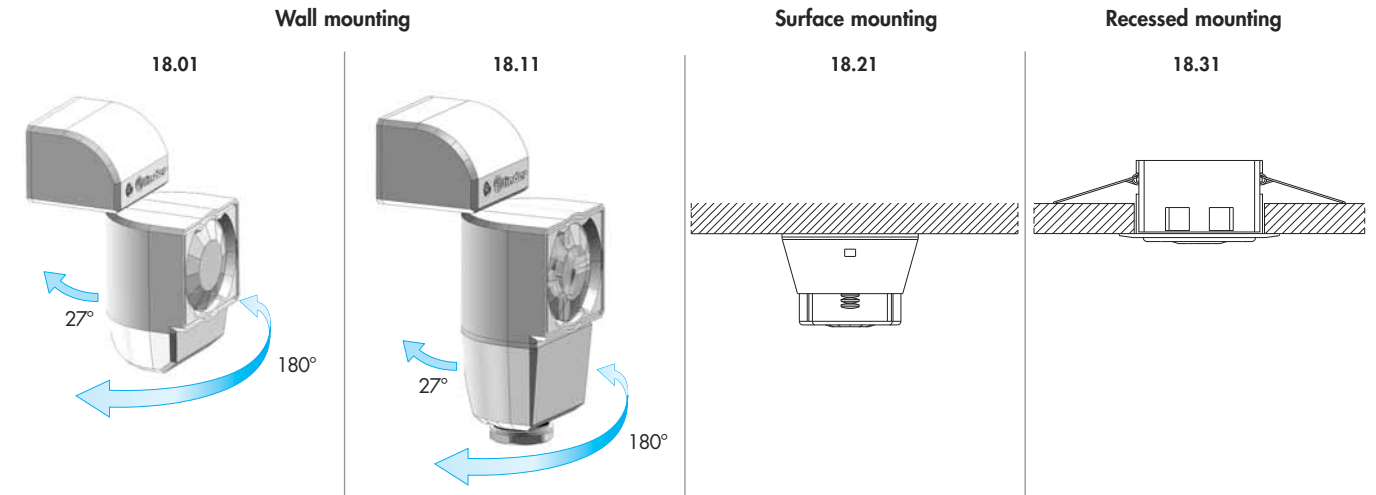
Type 18.21-0300 / 18.31-0300



The output relay will remain On for the pre-set time, following the last detection of movement.

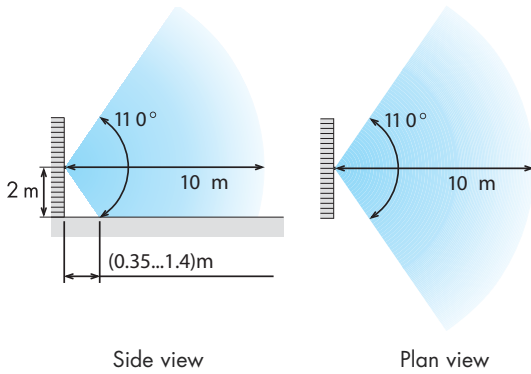


## Mounting and orientation

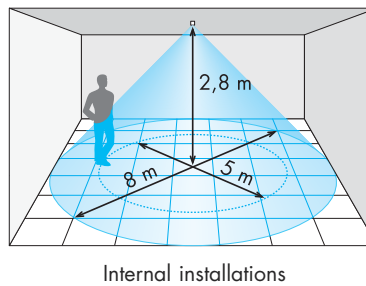


## Sensing area

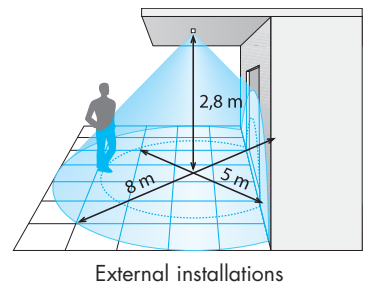
18.01, 18.11 - Wall mounting



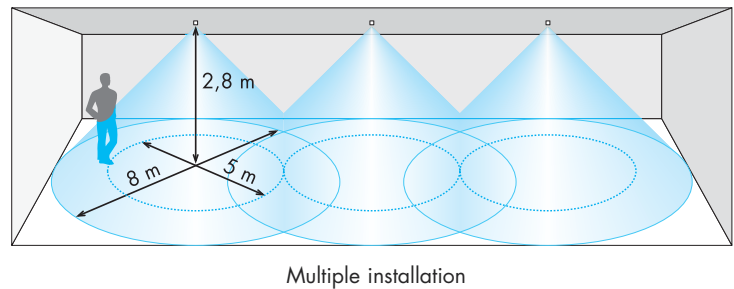
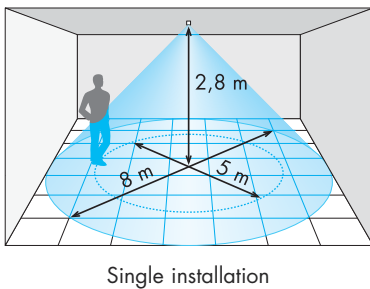
18.01 - Ceiling mounting



18.11 - Ceiling mounting



18.21, 18.31 - Internal ceiling installation, surface mounting or recessed mounting



## Accessories



### Beam limiter for 18.21 and 18.31 PIR movement detectors

Reduces the area of survey to 2 meters diameter (versus 8m) at an installation height of 2.8 meters.

